

## Deer Park Gardens Mitcham, CR4 4DY

**£285,000 Leasehold**

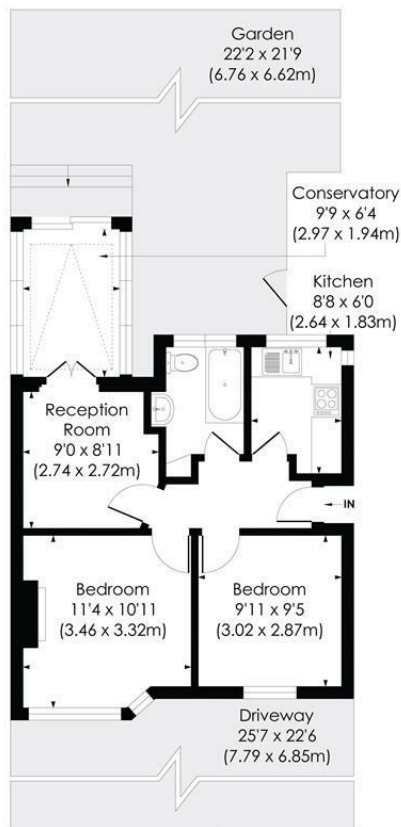


**Well presented Two bedroom purpose built ground floor maisonette with a long lease over 140 years. Situated in sought after cul de sac location. Off street parking to the front and private west facing garden. Being sold with the benefit of no onward chain. This is a fantastic purchase for any buyers looking to get onto the property market.**

## DEER PARK AVENUE, CR4

Approx. Gross Internal Floor Area

505 Sq. ft/46.95 Sq. m



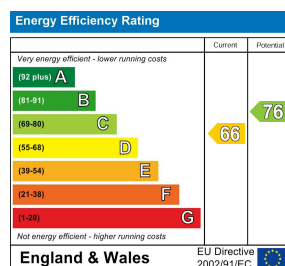
GROUND FLOOR

© Pixangle Property Marketing Ltd. info@pixangle.com Tel: 0208 870 2118

pixangle  
PROPERTY MARKETING

This floor plan has been prepared for the purpose of illustration only in accordance with the latest RICS code of measuring practice and is not to scale. All measurements and areas are approximate and whilst every effort has been made to ensure the accuracy of the plan contained here, no responsibility is taken for any error, omission or misstatement.

- Two bedroom Maisonette
- Ground floor
- Off Street Parking
- West facing garden
- No onward chain
- Good length lease
- EPC - D
- Merton Council Tax Band - C



For Free Mortgage Quote and Best Mortgage Rates, call Ellisons Mortgage Advisor on 0208 543 1166



Although these particulars are believed to be correct, their accuracy is not guaranteed and they do not form part of any contract.

Celebrating 30 years  
of successful Sales and  
Lettings in Merton

